

Apogee 3500

Digital Color Doppler Ultrasound Imaging System



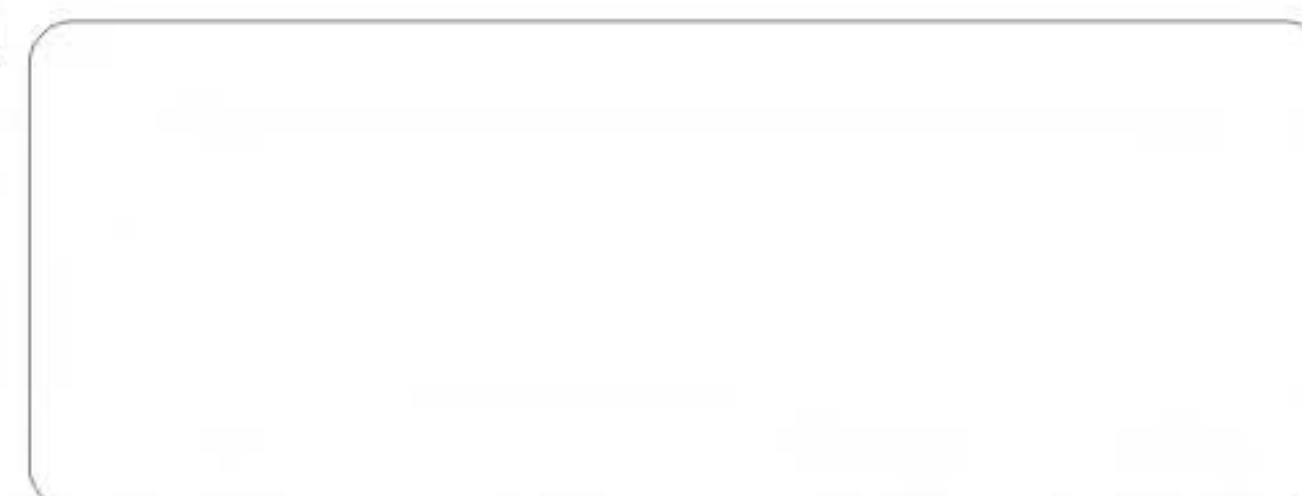
SIUI

Shantou Institute of Ultrasonic Instruments Co., Ltd.

Add: #77, Jinsha Road, Shantou 515041, Guangdong, China

Tel: +86-754-88250150 Fax: +86-754-88251499

E-mail: siui@siui.com Website: <http://www.siui.com>



Specifications and appearance are subject to change without prior notice.
DCY2.782.EN.Apogee3500touch.CY/6A01

SIUI



Apogee 3500

Digital Color Doppler Ultrasound Imaging System

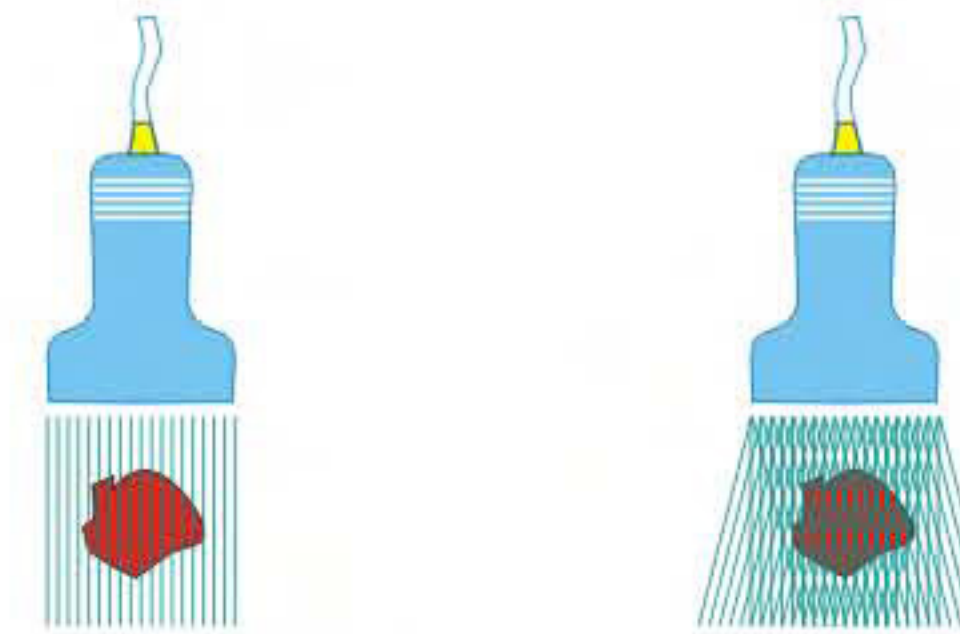
Dedicated to ultrasound system industry, SIUI introduces the Apogee 3500 Touch Digital Color Doppler Ultrasound Imaging System. By adopting multiple leading imaging technologies, the Apogee 3500 Touch is featured with high-resolution image quality and rich functions, suitable for ultrasound examination all over human body. During the examination, sonographers may enjoy diagnostic pleasure and patients may experience safety and comfort brought by advanced technologies.

Cutting Edge Ultrasound Imaging Technology

By adopting a variety of cutting edge ultrasound imaging technologies like Compound Imaging, Tissue Harmonic Imaging and Adaptive Speckle Reduction, the Apogee 3500 Touch is featured with many imaging modes, such as B mode (B, 2B and 4B), M mode, Color Doppler, PW Doppler, Trapezoidal Imaging and 3D/4D Imaging.

Compound Imaging (Option)

Compound imaging is performed on the same imaging area after adopting real-time multi-angle scanning, so as to reduce speckle noise, clutter, and other ultrasound artifacts affecting image quality. It will significantly improve resolution, resulting in clearer display of tissue boundary composed of different densities, which is conducive to identifying subtle pathological changes in early stage, as well as reducing lateral acoustic shadow shading over tissues at the back.



Conventional Imaging Technology

Compound Imaging Technology

Adaptive Speckle Reduction

The system will automatically track, identify and intensify useful tissue-characteristic information. Meanwhile, noise is filtered to increase S/N ratio, enabling clearer tissue boundary and more obvious image gradation, which is easy for distinguishing early-stage lesion tissues.

Tissue Harmonic Imaging

All the transducers are featured with Tissue Harmonic Imaging function, which enhances image resolution and reduces signal interference from surrounding tissues, thus image quality is improved greatly.

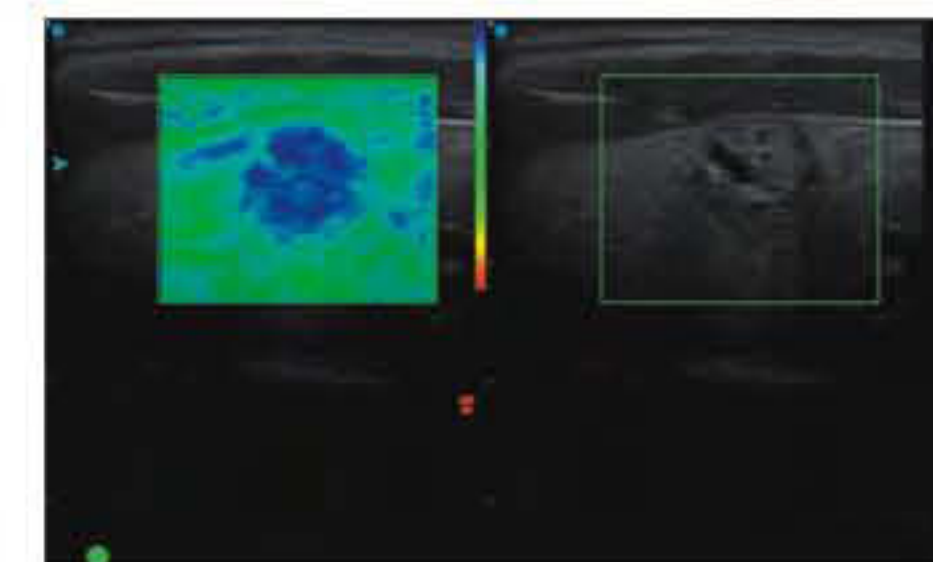
Trapezoidal Imaging / Extended Sector Imaging

The extended field of view displays more image information without sacrificing image quality, a convenient approach especially for scanning big-size organs.



Elastography (Option)

By compressing human tissue to obtain RF signals before and after compression, tissue deformation and elasticity status can be acquired by time delay estimation, which can be used as a tool for cancer detection.



Linear Steering

By steering the imaging area of linear array, sonographers can easily scan neighboring organs without moving the probe, thus scanning becomes more efficient and easier.

Complete Clinical Solution

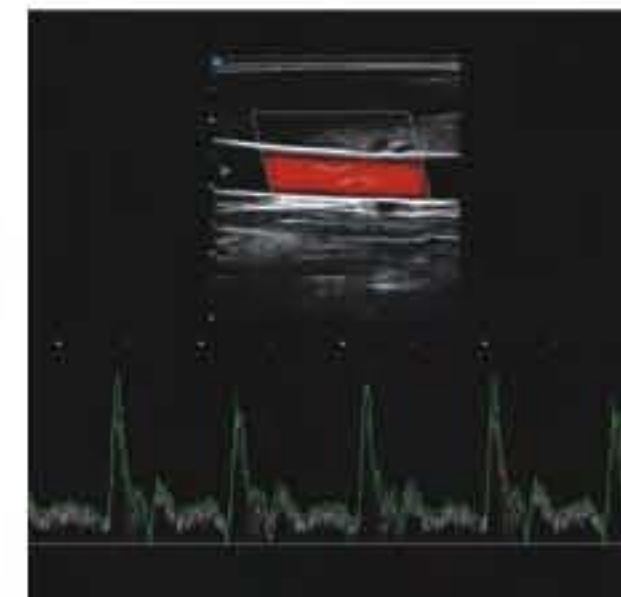


Color Steering

Usually flow display tends to be insensitive when flow direction is perpendicular to ultrasound beams. The Color Steering function will improve flow sensitivity, with several steering angles for selection.

Spectrum Envelope

Clinicians may choose fully automatic real-time spectrum envelope, manual envelope, or auto envelope by selecting the start point. Hemodynamic data, such as PSV and EDV, will be analyzed and displayed automatically.

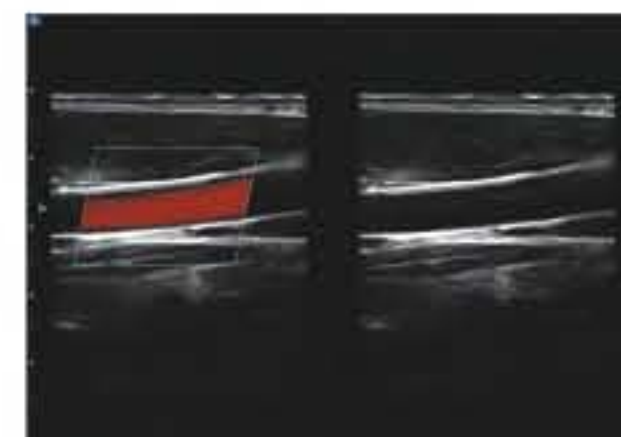


M Zoom

Especially good for M-mode exam on fetal heart. Analysis is more intuitive and measurement more accurate.

Split B/Color Mode

Sonographers may observe 2D and color images respectively and make precise diagnosis through comparison.



Powerful Document Management System

-  Large Capacity Hard Drive
-  DVD-RW
-  S-Video Out
-  USB Port
-  VGA Port
-  Network Port

Personalized Function

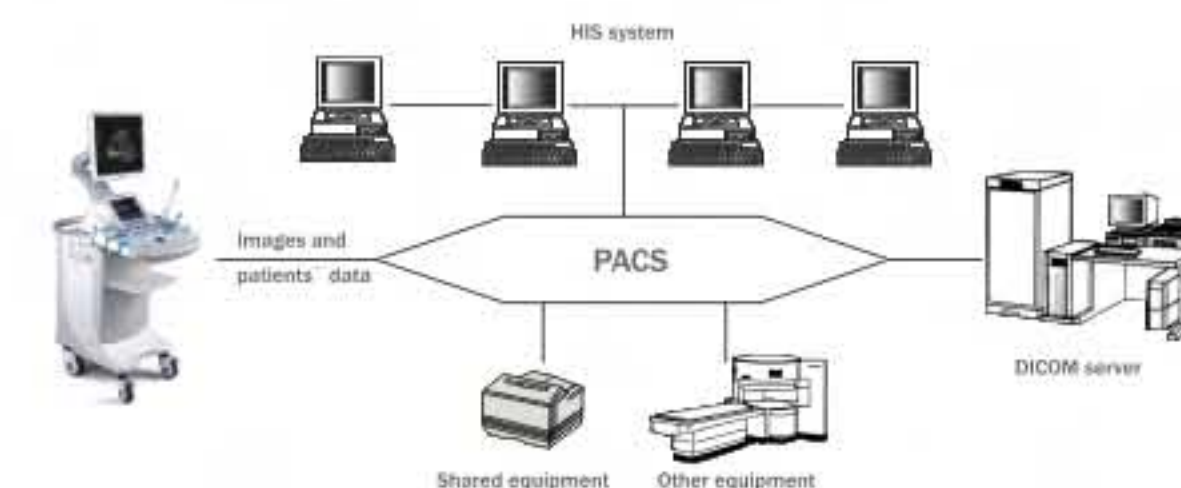
Sonographers may define exam types/modes and set image parameters based on personal preferences and practice habits, so as to achieve personalized operation and improve diagnostic efficiency.

Real-time Triplex

2D images, color images and spectrum images can be displayed synchronously in real time, a facility for easy comparison, analysis and more accurate sampling.

DICOM 3.0 (Option)

PACS and HIS systems can be connected via DICOM 3.0 (option) to achieve online teleconsultation.



WiFi Connectivity

Apogee 3500 Touch now can connect to Apple's iPad and iPhone via WiFi. With the client application offered by SIUI, iPad and iPhone user now can receive, review and process ultrasound images sent via WiFi from Apogee 3500 Touch, which bring more diagnostic flexibility and convenience to daily clinical practice.



Streamlined Workflow



Touch Screen Control

By operating the color touch screen, sonographers may fully understand the current operation flow at a glance and achieve their exams quickly.

Keyboard Drawer

With the drawer-designed keyboard, information can be inputted easily.



Live 3D Imaging

Unlike complicated operation in traditional live 3D ultrasound imaging, the Apogee 3500 Touch adopts simple and quick operation method. Just with a few simple steps, live 3D ultrasound images can be easily obtained.



Face



Yawning



Lower Limb



Face

Extensive Clinical Applications

With image processing technologies and measurement & calculation functions for different clinical applications, the Apogee 3500 Touch can be widely used in every clinical diagnosis, such as abdomen, OB/GYN, cardiology, urology, small parts and peripheral vessels.



Liver



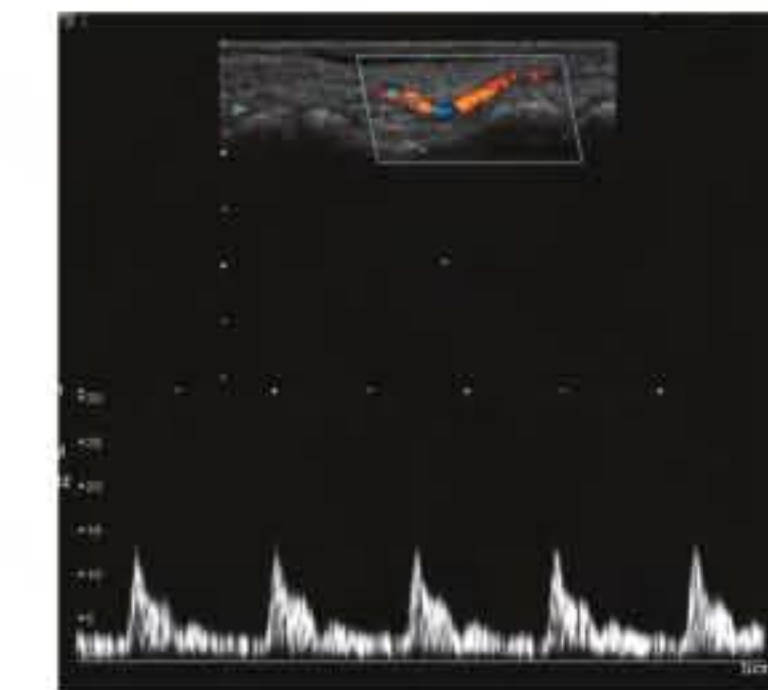
Uterus



Umbilical Artery Spectrum



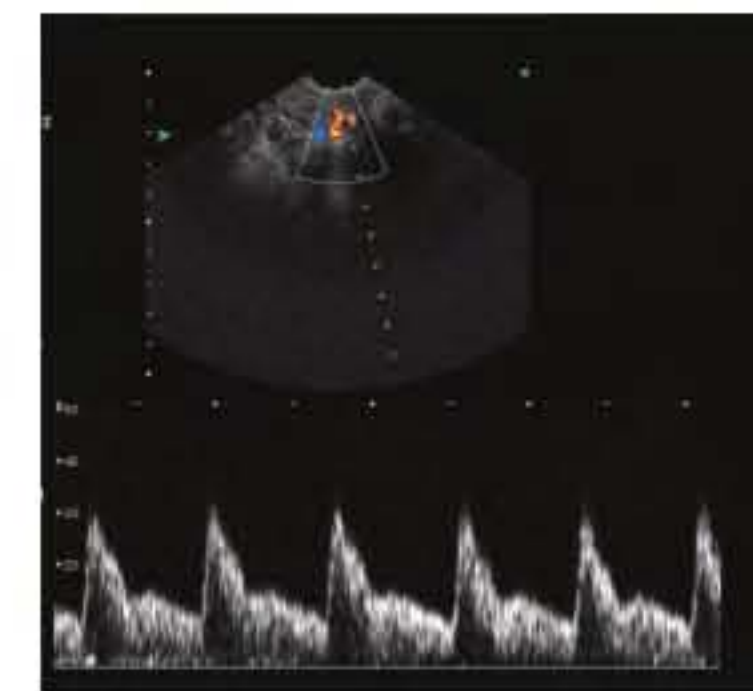
Heart



Finger Artery Spectrum



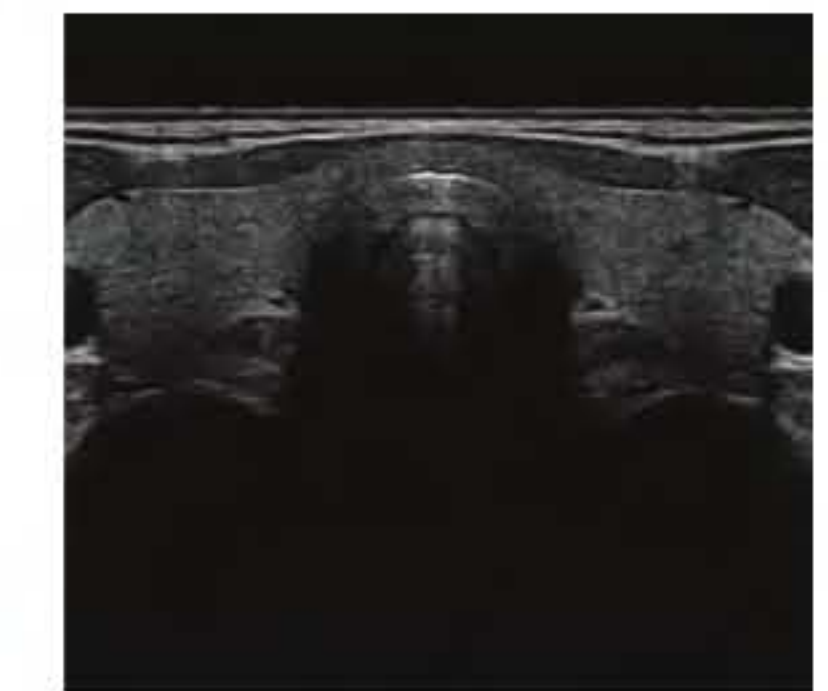
Chronic Nephritis



Ovary Artery Spectrum



Fetal Nose and Lip



Thyroid